

# *Genetic Resources Communication*

Genetic Resources Communication  
No. 17, 1993

Screening crop and pasture legumes for effective  
nitrogen fixing associations: list of host legumes  
and strains of root-nodule bacteria forming  
effective nitrogen fixing associations

R.A.Date<sup>1</sup>, R.W. Williams<sup>1</sup>, and H.V.A. Bushby<sup>1</sup>

(This GRC replaces and updates GRC Nos. 6&7, 1984)



ISSN 0159-6071  
ISBN 0 643 05333 6

Genetic Resources Communication  
No. 17, 1993

Screening crop and pasture legumes for effective  
nitrogen fixing associations: list of host legumes  
and strains of root-nodule bacteria forming  
effective nitrogen fixing associations

R.A.Date<sup>1</sup>, R.W. Williams<sup>1</sup>, and H.V.A. Bushby<sup>1</sup>

(This GRC replaces and updates GRC Nos. 6&7, 1984)

**SUMMARY:**

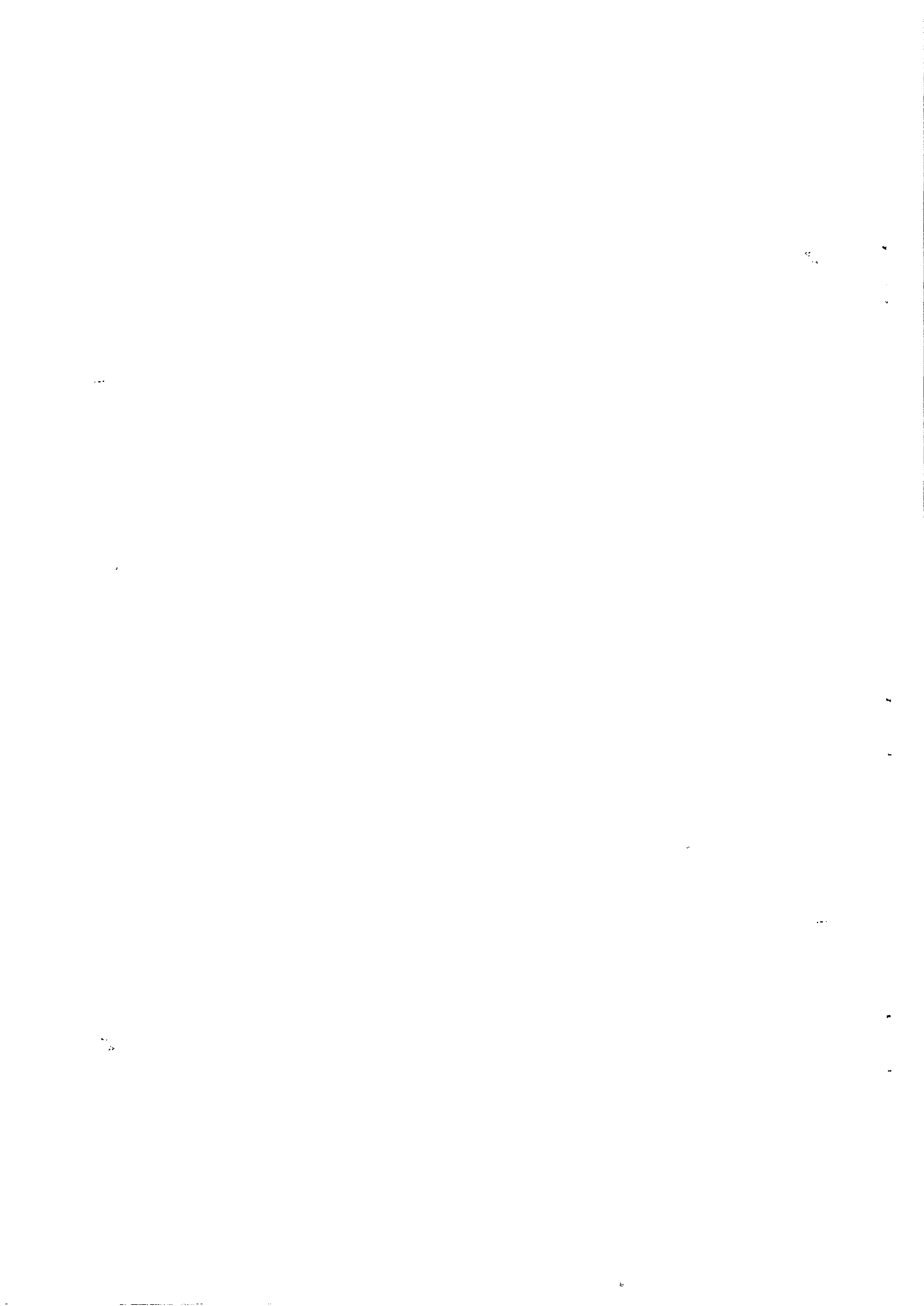
This communication reports the accumulated results of effectiveness screening tests of crop and pasture legumes, inoculated with root-nodule bacteria from the Division of Tropical Crops and Pastures' collection, during the period 1953-1992. Only those combinations that were effective are included. The results are arranged in genus/species/accession/cultivar order followed by the CB number of the effective strains. A list of strains recommended for the inoculation of commonly sown legumes is included.

---

<sup>1</sup> Division of Tropical Crops and Pastures, CSIRO, Cunningham Laboratory, 306 Carmody Rd, St Lucia, Queensland 4067, Australia.

Keywords: Rhizobium, Bradyrhizobium

Published by: CSIRO, Division of Tropical Crops and Pastures, St Lucia, Brisbane, Queensland 4067, Australia.



Screening crop and pasture legumes for specificity of nitrogen fixation: list of host legumes and strains of root-nodule bacteria forming effective nitrogen fixing associations.

R.A.Date, R.W.Williams and H.V.A.Bushby

The Division of Tropical Crops and Pastures (DTCP) has played a prominent role in the introduction and evaluation of new crop and forage legume germplasm for northern Australian agriculture. Associated with this has been the parallel introduction and evaluation of root-nodule bacteria (RNB) of the genera *Rhizobium* and *Bradyrhizobium*. The Division now maintains a genetic resource collection of 3490 strains of RNB and has been able to supply effective nitrogen-fixing strains for both experimental and primary industry use. All 17 of the strains used currently in Australia for the commercial inoculation of tropical crop and forage legumes result from DTCP evaluation programs. Fourteen of these strains originate directly from DTCP collection activities but all are recommended on the basis of their evaluation by the Division. Evaluation follows a four phase assessment schedule. The first determines nodulation specificity, i.e. the ability of strains of RNB to form nodules on a particular host. Generally this is done in sterile axenic test-tube culture of plants developed from surface sterilized seed on N-free nutrient medium in large test-tubes (Norris and Date, 1976). The second phase determines host legume x strain of RNB genotype-interactions for ability to fix nitrogen relative to a nitrogen control. In our laboratory this is done in the absence of other bacteria in the same N-free nutrient solution using our "sand-jar" system (Norris and Date, 1976). A selection of strains from these assessments is then tested in several soils in glasshouse soil-pot experiments to evaluate nodulating and N-fixation abilities in the presence of other soil microorganisms, especially other RNB that may compete for nodule forming sites (Phase 3, e.g., Date, 1991). The most successful strains from these tests are finally evaluated in the field (Phase 4, e.g., Bushby, Date and Butler, 1983) before being recommended for use commercially.

This communication reports the results of Phase 2 tests for the 1953-1991 period and updates and replaces the information in Genetic Resources Communications Nos 6 and 7 (Date and Norris, 1984; Bushby, Date, Norris and Panitz, 1984). All tests to evaluate nitrogen fixation effectiveness were completed using the "sand-jar" system (Norris and Date, 1976) with the exception that the N-free nutrient solution used for *Stylosanthes* was that of Date and Ratcliff (1989). Nitrogen was supplied as  $KNO_3$  at a rate equivalent to 35 to 50 kg N/ha (in 3 split-applications) depending on the bulk of growth normally expected for the test species. For tropical legume species, assessments were carried out in late spring to early autumn when glasshouse air temperatures were maintained between 25 and 35°C with supplementary heating and evaporative cooling with a minimum of 14 hrs daylight. For winter-growing species air temperatures ranged between 15 and 25°C with minimum of 10 hrs of daylight. Supplementary (incandescent) lights were used to extend daylength where necessary to prevent early onset of flowering. Effectiveness of the association between each host accession and strain of RNB was based on dry weights of plants relative to that of the plus N control after 6 to 8 weeks growth. Plant dry weight has been

previously observed to be a good index of effectiveness (Haydock and Norris, 1967; Haydock, Norris and Mannetje, 1980). We calculated this index as

$$100 \times (\text{Dry wgt} + \text{RNB}) / (\text{Dry wgt} + \text{N})$$

where Dry wgt + RNB = dry weight of whole plants inoculated with either *Rhizobium* or *Bradyrhizobium* and Dry wgt + N = dry weight of plus nitrogen control plants. Strains were rated as highly effective (HE), effective (E), partially effective (EI) and ineffective (I) when the effectiveness index values were respectively >80, ≥50-80, ≥35-50 and <35%.

In all there were 13504 individual tests (excluding replication) involving 1057 strains of which 534 formed an effective association with at least one legume host. The following lists report only those host x strain combinations with HE or E results. There were 5472 such combinations. The information is in genus/species order with the associated strains of RNB listed by CB number after each combination. The CB number is the Division of Tropical Crops and Pastures' CB Collection accession number. Details of the origin of each strain are available in the companion Genetic Resource Communication No. 16 (Date and Williams, 1993).

A summary list of strains of RNB recommended for experimental and commercial inoculation is included at the end of this communication.

Abbreviations used in list of host legumes x strains of RNB are:

CB = CSIRO, Brisbane strain accession number

CPI = Commonwealth Plant Introduction Number

CQ = CSIRO, DTCP Accession Number

TQ = " " " "

Q = Queensland Department of Primary Industry Plant  
Introduction Number

QA = " " " "

NUMBER = Accession Number. An alphabetic letter after the number signifies a selection from the original seed collection shown to be a significantly different morphological type.

## REFERENCES

- Bushby, H.V.A., Date, R.A. and Butler, K.L. (1983). *Rhizobium* strain evaluation of *Glycine max* cv. Davis, *Vigna mungo* cv. Regur and *V. unguiculata* cv. Caloona for three soils in glasshouse and field experiments. Aust. J. Exp. Agric. An. Husb. **23**, 43-53.
- Bushby, H.V.A., Date, R.A., Norris, D.O. and Panitz, R.B. (1984). *Rhizobium* screening for a range of crop and pasture legumes: Lists of strains of *Rhizobium* and host legumes forming effective and highly effective associations. CSIRO Aust., Div. Trop. Crops Past. Genet. Resourc. Commun. No. 7.
- Date, R.A. (1991). Nitrogen fixation in *Desmanthus*: Strain specificity of *Rhizobium* and responses to inoculation in acidic and alkaline soil. Trop. Grasslds. **25**, 47-55.
- Date, R.A. and Ratcliff, D. (1989). Growth, nodulation and nitrogen fixation in *Stylosanthes*: Effect of different root temperatures at two shoot temperatures. Exp. Agric. **25**, 446-460.
- Date, R.A. and Norris, D.O. (1984). Supplement to "*Rhizobium* screening of *Stylosanthes* for effectiveness in nitrogen fixation [Date and Norris (1979) Aust. J. Agric. Res. **30**,85-104]: Lists of host accessions and strains of *Rhizobium* forming effective and highly effective associations. CSIRO Aust., Div. Trop. Crops Past. Genet. Resource Commun. No. 6.
- Date, R.A. and Williams, R.W. (1993). The CB *Rhizobium/Bradyrhizobium* strain collection. CSIRO, Aust., Div Trop. Crops Past., Genet. Resource Commun. No. (NUGRC5).
- Haydock, K.P. and Norris, D.O. (1967). Opposed curves for nitrogen percent on dry weight by *Rhizobium* dependent and nitrate dependent legumes. Aust. J. Sci. **29**, 426-427.
- Haydock, K.P., Norris, D.O. and Mannelje 't, L. (1980). The relation between nitrogen percent and dry weight of nodulated legumes. Plant Soil. **57**, 353-362.
- Norris, D.O. and Date, R.A. (1976). Legume Bacteriology. In "Tropical Pasture Research - Principles and Methods". (Eds N.H. Shaw and W.W.Bryan) Comm. Bur. Past. Fld. Crops Bull. No.51:, pp. 134-174.

**LIST OF LEGUMES AND STRAINS OF ROOT-NODULE BACTERIA  
FORMING EFFECTIVE NITROGEN FIXING ASSOCIATIONS**

GENUS	Species	CPI NUMBER	CULTIVAR	CB STRAIN	ACCESSION NUMBER
Abrus	precatorius			756	
Acacia	harpophylla			205 513 888	
Acacia	mangium	CPI 15063		3156	
Aeschynomene	falcata	CPI 11500		2312 2388 2389 2390 2391	
Albizia	lebbeck			3035 3090	
Alysicarpus	rugosus	CPI 29736		278 448	
Alysicarpus	vaginalis			756 985 1015 1024 1243 3036	
Arachis	(sp.)	CPI 58121		530 756 985 1024 2802 3165 3462	
Arachis	burkartii	CPI 58109		530 749 756 2802 3125	
Arachis	hypogaea		Natal	31 530 743 745 746 749 756 936	
Arachis	hypogaea		Red Spanish	31 447 530 743 745 746 749 756 886 985 1024	
				3036 3125 3445 3446 3447 3448 3449 3450 3462	
Arachis	hypogaea		Spanish Imp	446 530 756 2190 2927 3036	
Arachis	hypogaea		Virginia	31 44 82 743 745 746 749	
Arachis	hypogaea	CPI 13970A		530 749 756 2802	
Arachis	monticola	CPI 58115B		530 756	
Arachis	monticola	CQ 990		530 749 756 2802	
Arachis	paraguanensis	CPI 91419		3125	
Arachis	pintoi	CPI 58113	Amarillo	530 749 756 2802 2927 3036 3125	
Arachis	pusilla	CPI 58116		530 749 756 2802	
Arachis	stenosperma	CPI 91420		530 3125	
Arachis	villosa	CPI 58118		530 3036 3462	
Cajanus	cajan		B15B	756 1024 3056 3068	
Cajanus	cajan		Hunt	756 1024 3056 3068	
Cajanus	cajan		Quantum	756 1024 3056 3068	
Cajanus	cajan	CPI 29947		136 756 987	
Calliandra	calothyrsus	CPI 115690		3059 3090 3169 3171 3458 3460	
Calliandra	calothyrsus			3169 3171 3282	
Calopogonium	caeruleum			756	
Centrosema	brasilianum	CPI 55698		2944 2947 2949	
Centrosema	pubescens			981 1067 1102 1103 1490 1491 1494 1698 1895 1922 1923	
Centrosema	pubescens	Q 8333	Belalto	1923 2947 2948	
Clitoria	lanceolata			756	
Clitoria	ternatea			279 756 1015 1024 3319 3320 3321	
Clitoria	ternatea	CPI 38284		82 159 756 985 1024 1717	
Codariocalyx	gyroides	CPI 32893		627 1517 2121	
Crotalaria	lanceolata			188	
Cyamopsis	psoraloides	CPI 10329		121 756 886	
Cyamopsis	senegalensis			985 1015 1024 3036	
Cyamopsis	tetragonolobus			756 1015 1024 3319 3320 3321	
Cyamopsis	tetragonolobus	S 6		756 985 1024 3036	

CSIRO, Division of Tropical Crops & Pastures, Root-Nodule Bacteria Genetic Resource Collection, April 1993



GENUS	Species	CPI NUMBER	CULTIVAR	CB STRAIN	ACCESSION NUMBER
Cyamopsis	tetragonolobus	S 16		756 985 1024	3036
Cyamopsis	tetragonolobus	S 36		756 985 1024	3036
Cyamopsis	tetragonolobus	S 48		756 985 1024	
Desmanthus	brevipes	CPI 90362		948 1397 3108	3126 3127 3128 3130 3132 3138
Desmanthus	covillei	CPI 90311		948 1397 3059	
Desmanthus	covillei	CPI 90816		948 1397 2001 3060	3108 3126 3127 3128 3129 3130 3131
				3132 3133 3138	
Desmanthus	fruticosus	CPI 84960		948 1397 3059 3060	3108 3126 3127 3128 3129 3130 3131
				3132 3133 3138	
Desmanthus	illinoensis	CPI 90364		948 1397 3059 3060	3126 3132 3133
Desmanthus	subulatus	CPI 90857		1397 2001 3059 3060	3108 3126 3127 3128 3129 3130 3131
				3132 3133 3138	
Desmanthus	virgatus	CPI 30205		948 1397 2002 3059	3060 3108 3126 3127 3132 3133 3138
Desmanthus	virgatus	CPI 33201		1397 3128 3130 3132	
Desmanthus	virgatus	CPI 37143		948 1397 2001 3059	3060 3126 3127 3128 3129 3130 3131
				3132 3133 3138	
Desmanthus	virgatus	CPI 37538		1397 3126 3127	
Desmanthus	virgatus	CPI 38351		948 1397 3059 3060	3126 3127 3128 3129 3130 3131 3132
Desmanthus	virgatus	CPI 40071		81 948 1397 3059	3060 3126 3127 3128 3130 3131 3133
				3138	
Desmanthus	virgatus	CPI 55719		948 1397 2001 3059	3060 3108 3126 3127 3128 3129 3130
				3131 3132 3133	
Desmanthus	virgatus	CPI 65497		1397	
Desmanthus	virgatus	CPI 65947		1397 3060 3127 3128	3129 3130 3131 3132
Desmanthus	virgatus	CPI 67642		1397 3060	
Desmanthus	virgatus	CPI 76052		81 948 1397	
Desmanthus	virgatus	CPI 76503		948 1397	
Desmanthus	virgatus	CPI 78369		81 948 1397 2001 3059	3060
Desmanthus	virgatus	CPI 78372		1397 2001 3108 3127	3128
Desmanthus	virgatus	CPI 78373		1397 3127	
Desmanthus	virgatus	CPI 78379		81 1397 3059 3108	3126 3133 3138
Desmanthus	virgatus	CPI 78381		81 1397 3059 3060	3133
Desmanthus	virgatus	CPI 78382		948 1397 2001 3059	3060 3108 3126 3127 3128 3129 3130
				3131 3132 3138	
Desmanthus	virgatus	CPI 78385		81 3133 3138	
Desmanthus	virgatus	CPI 79653		948 1397 3059 3108	3126 3128 3129 3131 3132
Desmanthus	virgatus	CPI 81337		81 948 1397 2001 3059	3060 3108 3126 3127 3128 3129
				3130 3131 3132 3133 3138	
Desmanthus	virgatus	CPI 83570		3130	
Desmanthus	virgatus	CPI 84508		1397 2001 3108 3126	3127 3128 3129 3130 3131 3132 3133
				3138	

GENUS	Species	CPI NUMBER	CULTIVAR	CB STRAIN	ACCESSION NUMBER
Desmanthus	virgatus	CPI 84991		81 948 1397 2001 3059 3060	
Desmanthus	virgatus	CPI 85177		948 1397 3108 3126 3127 3128 3129 3130 3131 3132	
Desmanthus	virgatus	CPI 85178		948 1397 3059 3060 3108 3126 3127 3128 3129 3130 3131	
Desmanthus	virgatus	CPI 85179		3132 948 1397 2001 3108 3126 3127 3128 3129 3130 3131 3132	
Desmanthus	virgatus	CPI 85182		3133 3138 948 1397 3059 3060	
Desmanthus	virgatus	CPI 90750		948 1397 3108 3126 3127 3128 3129 3130 3131 3132 3133	
Desmanthus	virgatus	CPI 90751		948 1397 3059 3060 3108 3126 3127 3128 3129 3130 3131	
Desmanthus	virgatus	CPI 90754		3132 3133 3138 948 1397 3059 3060 3108 3126 3127 3128 3129 3130 3131	
Desmanthus	virgatus	CPI 90755		3132 3133 3138 948 1397 3059 3108 3126 3127 3128 3129 3130 3131 3132	
Desmanthus	virgatus	CPI 90914		1397 3059	
Desmanthus	virgatus	CPI 91146		948 1397 3108 3126 3127 3128 3129 3130 3131 3132 3133	
Desmanthus	virgatus	CPI 91326		3138 948 1397 3059 3060 3126 3127 3128 3129 3130 3131 3132	
Desmanthus	virgatus	CPI 91496		3138 948 1397 3059 3060	
Desmanthus	virgatus	CPI 92800		1397 3060	
Desmanthus	virgatus	CPI 92803		1397 3059 3060 3108 3126 3127 3128 3129 3130 3131 3132	
Desmanthus	virgatus	CPI 92805		3133 3138 948 1397 3059 3060	
Desmanthus	virgatus	CPI 92818		948 3060 3126 3127 3128 3129 3130 3132	
Desmanthus	virgatus	TQ 90		948 1397 3060 3126 3127 3128 3129 3130 3131 3132 3133	
Desmodium	adscendens			1517	
Desmodium	distortum	CPI 28324		627 756 1057	
Desmodium	heterophyllum	CPI 31953		46	
Desmodium	heterophyllum	QA 934		2085 2122 2123 2163 2164	
Desmodium	intortum			627 1027 1517 1524 1622 1627 1632 1709 1859	
Desmodium	intortum	CPI 17916	Greenleaf	128 627 756 1057	
Desmodium	intortum	CPI 18009	Greenleaf	128 627 756 1057	
Desmodium	intortum	CPI 23189	Greenleaf	128 627 756 1057	
Desmodium	uncinatum			1263 1524 1564 1632 1771 1859	
Desmodium	uncinatum	CPI 8990	Silverleaf	121 128 167 181 187 265 627 756 1517 1622	
Dolichos	sericeus	CPI 25360		121 159 756	
Dolichos	trilobus	CPI 15932		159 756	
Gliricidia	sepium		Bali	3057 3059 3083 3084 3085 3086 3087 3088 3089 3090 3091	
Gliricidia	sepium		West Indian	3092 3057 3059 3083 3084 3085 3086 3087 3088 3089 3090 3091	

GENUS	Species	CPI NUMBER	CULTIVAR	CB STRAIN	ACCESSION NUMBER																
Glycine	latifolia	CQ	3368		159	756	985	1024	1243	1908	2795	2987									
Glycine	max				453																
Glycine	max			Bourke	1003	1753	1786	1791	1793	1794	1795	1797	1799	1802	1803						
					1805	1809	1810	1911	1924	1925	1926	1929	1930	1932	1934						
					1935	1940	1941	1942	1943												
Glycine	max			Davis	1809	2940															
Glycine	max			Dorman	1799	1809	1924	1926													
Glycine	max			Hill	1799	1809	1924	1926													
Glycine	max			Leslie	1003	1753	1786	1791	1793	1794	1795	1799	1802	1803	1804						
					1805	1809	1810	1911	1924	1925	1926	1930	1932	1934	1935						
					1942																
Glycine	max			Masoy	327	1003															
Glycine	max			Nanda	327	436	1003	1056	1668	1753	1786	1791	1793	1794	1795	1799					
					1801	1802	1803	1804	1805	1809	1810	1911	1924	1925	1926	1929					
					1930	1932	1934	1935	1940	1941	1942	1943									
Glycine	max			Wills	1003	1753	1786	1791	1794	1795	1799	1802	1803	1805	1809	1911					
					1925	1926	1929	1932	1934	1935	1940	1941	1942								
Glycine	max		27		1003																
Glycine	max		37		1003																
Glycine	max		40		327	1003															
Glycine	max		57		1003	1056															
Glycine	max		3937		1003	1056															
Glycine	max	CPI	17192		121	327	756	1003													
Glycine	max	MBH	72113		1003	1786	1791	1795	1802	1809	1911	1934									
Indigofera	hirsuta	CPI	21352		350	756															
Indigofera	schimperii	CPI	16055		1015	1024															
Indigofera	schimperii	CPI	52621		1024																
Indigofera	schimperii	CPI	65477		1015	1024															
Indigofera	schimperii	CPI	69495		1015																
Indigofera	spicata	CPI	11412		152	163	253	280	282	286	330	331	333	334	336						
					337	339	341	343	344	345	347	348	349	350	353						
					355	356	358	441	501												
Indigofera	spicata	CPI	24205		756																
Lablab	purpureus	CPI	16883	Rongai	159	756	1024	1091													
Lablab	purpureus	CPI	23551		159	170	756														
Lablab	purpureus	CPI	34004		159	756	1024	1091													
Lablab	purpureus	CPI	34777		159	756	1024	1091													
Lespedeza	juncea			v.sericea	159	756															
Lespedeza	sericea			Arlington	159																
Lespedeza	sericea			Local a	756																
Lespedeza	sericea			Local b	159	756															

CSIRO, Division of Tropical Crops & Pastures, Root-Nodule Bacteria Genetic Resource Collection, April 1993

GENUS	Species	CPI NUMBER	CULTIVAR	CB STRAIN	ACCESSION NUMBER										
Lespedeza	sericea		Okinawa	159	756										
Lespedeza	stipulacea		Summit	159	756										
Lespedeza	striata		Kobe	159	756										
Lespedeza	striata		Local a	159	756										
Lespedeza	striata		Local b	159	756										
Leucaena	diversifolia	CPI 33820		3060	3108	3298									
Leucaena	greggii	CPI 91198		3108											
Leucaena	leucocephala		Cunningham	81	924	948	1149	1397	2001	2002	2003	2004	2914	2915	
				2919	2922	2923	2929	3060	3108	3138	3297	3298	3299	3328	
				3329	3330	3331	3333	3334	3335	3336	3337	3338	3340	3341	
				3342	3343	3344	3347	3348	3349	3350	3351	3352	3353	3354	
				3355	3356	3357	3358	3359	3360	3361	3362	3363	3364	3365	
				3366	3367	3368	3369	3370	3371	3372	3373	3374	3375	3376	
				3377	3378	3379	3380	3381	3382	3383	3384	3385	3386	3387	
				3388	3389	3390	3391	3392	3393	3394	3395	3396	3397	3402	
				3403	3404	3405	3406	3407	3408	3409	3410	3411	3412	3413	
				3414	3415	3416	3417	3418	3419	3420	3421	3422	3423	3425	
				3426	3427	3428	3429	3430	3431	3432	3433	3434	3435	3436	
				3437	3438	3439	3440	3441	3442	3443	3444				
Leucaena	leucocephala		Line 3	81											
Leucaena	leucocephala		Peru	81	225	262	415	430	717	947	948	952	1149	1274	
				1353	2154	2919	2921	2922							
				3060	3108	3138	3197	3298							
Leucaena	pulverulenta	B 46		3060	3108	3138	3197	3298							
Leucaena	retusa	CPI 85171		3060	3297										
Leucaena	retusa	CPI 85211		3060	3297	3298									
Listia	heterophylla	CPI 18424		376	730	768	1775	2343							
Lotononis	angolensis	CPI 26293	Commercial	1297	1298	1299	1321	1322	1323	1348	2406				
Lotononis	angolensis	CPI 32585		1323	2645										
Lotononis	angolensis	CPI 32655		1323	2406										
Lotononis	angolensis	CPI 32953		1323	2406	2645									
Lotononis	angolensis?	CPI 43777		1323	2406	2645									
Lotononis	bainesii	CPI 16833	Miles	360	376	730	731	768	1775	1776	1777	1778	1779	2343	
				2344											
Lotononis	bainesii	CPI 24130		376	1775	2343									
Lotononis	bainesii	CPI 31810		376	730	1775	2343								
Lotononis	bainesii	CPI 47573		376	730	1775	2343								
Lotononis	bainesii	CPI 47574		376	730	1775	2343								
Lotononis	bainesii	CPI 47575		376	730	1775	2343								
Lotononis	bainesii	CPI 61572		376	730	1775	2343								
Lotononis	bainesii	CQ 1114		376	730	1775	2343								
Lotononis	laxa	CPI 62213		2648											

10

GENUS	Species	CPI NUMBER	CULTIVAR	CB STRAIN	ACCESSION NUMBER
Lotononis	mucronata	CPI 60286		1323 2695 2705	
Lotononis	mucronata	CPI 60287		2705	
Lotononis	mucronata	CPI 60288		2695	
Lotononis	mucronata	CPI 62214		376	
Lotononis	orthorhiza	CPI 60289		2676	
Lotononis	stipulosus	CQ 1332		1394	
Lotus	corniculatus	CPI 32278	Viking	669 1204	
Lotus	edulis	CPI 32565		669 1300	
Lotus	maroccanus	CPI 23601		1300	
Lotus	uliginosus			1168 1193 1209	
Macroptilium	atropurpureum		Rustproof	82 328 530 756 985 1024 1243 1650 1717	
Macroptilium	atropurpureum		Siratro	54 82 103 121 170 328 512 530 756 985 1024	
				1243 1650 1675 1717 1727 2033 2126 2229 2248 3319 3320	
				3321	
Macroptilium	atropurpureum	CPI 18556		121 170 284 512 661 791 890	
Macroptilium	lathyroides			121 170 284 756	
Macroptilium	martii	CPI 49780		1717	
Macroptilium	pandoratum	CPI 78439		1717	
Macrotyloma	africanum	CPI 24972		121 159 170 756	
Macrotyloma	axillare	CPI 17814		121 159 170 441 756 786	
Macrotyloma	daltonii			756 1024 3319 3320 3321	
Macrotyloma	uniflorum	CPI 14629		121 159 170 756	
Medicago	polymorpha			112	
Medicago	sativa			61 63 64 110 113 115 118 257 529 813 967	
				1035 1170 1171 1368 1445 1446	
Medicago	sativa		African a	112 228 1170 1445 1446	
Medicago	sativa		African b	112 220 1170 1445 1446	
Medicago	sativa		Hairy peru	112 227 1170 1445 1446	
Medicago	scutellata			61 967 1445	
Medicago	truncatula			61 967	
Medicago	truncatula		Jemalong	61 63 64 98 110 112 113 115 119 214 217	
				227 257 419 1035	
Medicago	truncatula		Woodside	1445	
Mimosa	pigra			3318	
Neonotonia	wightii			756 985 1024 1243 3036	
Neonotonia	wightii	CPI 16673		121 232 249 291 327 453 756 1057	
Neonotonia	wightii	CPI 18419		453 756 1057 1918	
Neonotonia	wightii	CPI 25421		453 756 1057 1918	
Neonotonia	wightii	CPI 25700		453 1057 1908 1918	
Neonotonia	wightii	CPI 25702	Cooper	453 756 1057 1267 1668 1908 1915 1916 1918	
Neonotonia	wightii	CPI 25703		453 756	

CSIRO, Division of Tropical Crops & Pastures, Root-Nodule Bacteria Genetic Resource Collection, April 1993

GENUS	Species	CPI NUMBER	CULTIVAR	CB STRAIN	ACCESSION NUMBER
Neonotonia	wightii	CPI 25919		453 756 1057 1908 1918	
Neonotonia	wightii	CPI 29744		453 756 1908 1918	
Neonotonia	wightii	CPI 30366		453 1057 1918	
Neonotonia	wightii	CPI 30497		453 756 1057 1918	
Neonotonia	wightii	CPI 32862		453 756 1057 1918	
Neonotonia	wightii	CPI 32942		756 1908 1918	
Neonotonia	wightii	CPI 32944		453 756 1057 1918	
Neonotonia	wightii	CQ 363	Tinaroo	453 756 1057 1267 1668 1908 1914 1916 1918	
Neonotonia	wightii	CQ 560	Clarence	453 756 1057 1908 1918 2195	
Otoptera	burchelli	CPI 60314		530 627 756 985 1015 1024 3165	
Phaseolus	coccineus	CPI 37026		121 170 890 1071 1224	
Phaseolus	coccineus	CPI 37028		121 170 512 890 1071 1224 1963	
Phaseolus	coccineus	CPI 37029		170	
Phaseolus	coccineus	CPI 37030		121 170 512 890 1071 1224 1963	
Phaseolus	vulgaris		French	121 170 512 890 1071 1224 1963	
Pisum	sativum			108	
Pueraria	javanica	CPI 32118		957	
Pueraria	phaseoloides	CPI 16864		756	
Pueraria	phaseoloides	CPI 32118		756	
Rhynchosia	minima			756 985 1024 3036	
Sesbania	aculeata			3200 3300 3301 3303	
Sesbania	erubescens			3023 3200 3300 3301	
Sesbania	grandiflora	CQ 2709		756 2743 3023 3200 3300 3301	
Stylosanthes	(sp.)A	CPI 34148		82 103 328 756 2229 2248	
Stylosanthes	(sp.)B	CPI 55797		530 756 2248	
Stylosanthes	angustifolia	CPI 33433		2168	
Stylosanthes	angustifolia	CPI 40236		756	
Stylosanthes	caldicola	CPI 36045		2033 2126 2144	
Stylosanthes	caldicola	CPI 73524		3050	
Stylosanthes	caldicola	CPI 73525		2126	
Stylosanthes	capitata	CPI 40238		2898 3049 3055	
Stylosanthes	capitata	CPI 40240		2898 3048 3049 3050 3051 3052 3055 3289	
Stylosanthes	capitata	CPI 40240A(1)		2898	
Stylosanthes	capitata	CPI 40240B		2898 3055	
Stylosanthes	capitata	CPI 40241		2898 3049 3050 3055 3294	
Stylosanthes	capitata	CPI 49809B		2898 3055	
Stylosanthes	capitata	CPI 50261A		3049	
Stylosanthes	capitata	CPI 52061A		2898 3055 3289	
Stylosanthes	capitata	CPI 52061B		2898	
Stylosanthes	capitata	CPI 52069		2898 3055	
Stylosanthes	capitata	CPI 52169		2898 3049	

CSIRO, Division of Tropical Crops & Pastures, Root-Nodule Bacteria Genetic Resource Collection, April 1993

GENUS	Species	CPI NUMBER	CULTIVAR	CB STRAIN	ACCESSION NUMBER															
Stylosanthes	capitata	CPI 55840		2898	3049	3055														
Stylosanthes	capitata	CPI 55843		2898	3049	3055														
Stylosanthes	capitata	CPI 75149		2898	3055															
Stylosanthes	capitata	CPI 81403		2898	3048	3049	3050	3051	3052	3055										
Stylosanthes	capitata	CQ 1673		2898	3055															
Stylosanthes	erecta	CPI 34113B		756																
Stylosanthes	erecta	CPI 34114		756																
Stylosanthes	erecta	CPI 34118		44	82	103	159	328	530	756	1272	1408	1552	1650						
				1675	1727	1984	2033	2144	2152	2168	2229	2248								
Stylosanthes	fruticosa	CPI 25368		756																
Stylosanthes	fruticosa	CPI 32717		82	103	328	530	756	1272	1408	1650	1675	1984							
Stylosanthes	fruticosa	CPI 32717A		756																
Stylosanthes	fruticosa	CPI 32717B		756																
Stylosanthes	fruticosa	CPI 32871		756																
Stylosanthes	fruticosa	CPI 33517		756																
Stylosanthes	fruticosa	CPI 34119		756																
Stylosanthes	fruticosa	CPI 40615		756																
Stylosanthes	fruticosa	CPI 40764		756																
Stylosanthes	fruticosa	CPI 41116		82	103	159	530	756	1272	1408	1650	1675								
Stylosanthes	fruticosa	CPI 41117		756																
Stylosanthes	fruticosa	CPI 41118		756																
Stylosanthes	fruticosa	CPI 41219		82	328	756	985	1015	1024	1243	1272	1408	1552	1675						
				2033	2126	2152	2168	2229	3036											
Stylosanthes	fruticosa	CPI 41219A		82	103	159	328	530	756	1272	1408	1650	1675	1984						
				2033	2126	2152	2168	2229	2248											
Stylosanthes	fruticosa	CPI 41220A		756																
Stylosanthes	fruticosa	CPI 41220B		756																
Stylosanthes	fruticosa	CPI 43349		756																
Stylosanthes	fruticosa	CPI 45174A		756																
Stylosanthes	fruticosa	CPI 45175		756																
Stylosanthes	fruticosa	CPI 45249		756																
Stylosanthes	fruticosa	CPI 47067		756																
Stylosanthes	fruticosa	CPI 47068		756																
Stylosanthes	fruticosa	CPI 48386		756																
Stylosanthes	fruticosa	CPI 48387		756																
Stylosanthes	fruticosa	Q 8361		82	103	328	1408	1650	1675	2126	2152	2248								
Stylosanthes	guianensis		RLB1	756																
Stylosanthes	guianensis	CPI	RLB1	756																
Stylosanthes	guianensis	CPI 5630	Schofield	44	47	82	93	103	105	159	236	240	312	321						
				328	438	442	470	481	486	516	530	756	1408	1552						
				1580	1650	1675	1727	2033	2168	2229	2248									

13





GENUS	Species	CPI	NUMBER	CULTIVAR	CB	STRAIN	ACCESSION	NUMBER										
Stylosanthes	guianensis	CPI	34927		82	2229												
Stylosanthes	guianensis	CPI	34928C		82	1552												
Stylosanthes	guianensis	CPI	35795		328	1552	2229											
Stylosanthes	guianensis	CPI	35820B		82	159	328	1552	1580	1650	2033	2229	2248					
Stylosanthes	guianensis	CPI	36257		82													
Stylosanthes	guianensis	CPI	37204A		44	82	103	159	328	530	756	1408	1552	1580	1727			
					2033	2168	2229											
Stylosanthes	guianensis	CPI	37204B		756													
Stylosanthes	guianensis	CPI	37205		82	103	159	756	1408	1650	2033	2168	2229	2248				
Stylosanthes	guianensis	CPI	37205B		756													
Stylosanthes	guianensis	CPI	37512		82	328	756	1408	1552	1650	2168	2229	2248					
Stylosanthes	guianensis	CPI	38222		82	159	328	530	756	1408	1580	1650	1727	2033	2168			
					2229	2248												
Stylosanthes	guianensis	CPI	38349		82	756	1552	2248										
Stylosanthes	guianensis	CPI	38357		82	159	328	530	756	1408	1650	1727	2168	2229				
Stylosanthes	guianensis	CPI	38369		756													
Stylosanthes	guianensis	CPI	38385		756													
Stylosanthes	guianensis	CPI	38391		756													
Stylosanthes	guianensis	CPI	38606		756													
Stylosanthes	guianensis	CPI	38640		756	1650	2229											
Stylosanthes	guianensis	CPI	38754	Cook	82	103	159	328	530	756	1408	1580	1650	1727	2033			
					2168	2229	2248											
Stylosanthes	guianensis	CPI	39111D		756													
Stylosanthes	guianensis	CPI	39114		328	1650	2033	2229										
Stylosanthes	guianensis	CPI	39121		756													
Stylosanthes	guianensis	CPI	39122		756													
Stylosanthes	guianensis	CPI	40205	Fitzroy	756	1015	1024	1243	3036									
Stylosanthes	guianensis	CPI	40252A		1580	1650	2229	2248										
Stylosanthes	guianensis	CPI	40255	Graham	82	103	530	756	1024	1408	1727	2168	2229	2248				
Stylosanthes	guianensis	CPI	40256		44	82	159	328	530	756	1408	1650	2033	2126	2248			
Stylosanthes	guianensis	CPI	40257		2229	2464	2797											
Stylosanthes	guianensis	CPI	40258		82													
Stylosanthes	guianensis	CPI	40261		82	328	1650	2229										
Stylosanthes	guianensis	CPI	40263		756													
Stylosanthes	guianensis	CPI	40293		2229													
Stylosanthes	guianensis	CPI	40294		756													
Stylosanthes	guianensis	CPI	40297		756													
Stylosanthes	guianensis	CPI	40567		756													
Stylosanthes	guianensis	CPI	40567A		756													
Stylosanthes	guianensis	CPI	40567B		756													
Stylosanthes	guianensis	CPI	40568A		756													

GENUS	Species	CPI NUMBER	CULTIVAR	CB STRAIN	ACCESSION NUMBER																		
Stylosanthes	guianensis	CPI 40568B(1)		756																			
Stylosanthes	guianensis	CPI 40568B(2)		756																			
Stylosanthes	guianensis	CPI 40568C		756																			
Stylosanthes	guianensis	CPI 40568C(1)D		756																			
Stylosanthes	guianensis	CPI 40568C(1)P		756																			
Stylosanthes	guianensis	CPI 40568C(D)		756																			
Stylosanthes	guianensis	CPI 40568C(P)		756																			
Stylosanthes	guianensis	CPI 41209A		82	103	159	756	1408	1650	2033	2126	2168	2229	2248									
Stylosanthes	guianensis	CPI 41209B		756																			
Stylosanthes	guianensis	CPI 41209B(2)		756																			
Stylosanthes	guianensis	CPI 41209B(3)		756																			
Stylosanthes	guianensis	CPI 41209C		756																			
Stylosanthes	guianensis	CPI 41211	Endeavour	82	103	159	328	756	1650														
Stylosanthes	guianensis	CPI 41218		82	103	159	328	530	756	1408	1650	1727	2033	2168									
Stylosanthes	guianensis	CPI 43205B		756																			
Stylosanthes	guianensis	CPI 43206		82	328	2248																	
Stylosanthes	guianensis	CPI 43831		756																			
Stylosanthes	guianensis	CPI 45173A		756																			
Stylosanthes	guianensis	CPI 45173B		756																			
Stylosanthes	guianensis	CPI 46585		756																			
Stylosanthes	guianensis	CPI 46589A		756																			
Stylosanthes	guianensis	CPI 46589B		756																			
Stylosanthes	guianensis	CPI 46589C		756																			
Stylosanthes	guianensis	CPI 46590		756																			
Stylosanthes	guianensis	CPI 47396		756																			
Stylosanthes	guianensis	CPI 79637		2229	2464	3055																	
Stylosanthes	guianensis	CPI 79639		2229	2464	2797	3055																
Stylosanthes	guianensis	CQ 1265	Oxley	82	1552	1727	2150	2212	2216	2229	2286	2325	2354	2464									
				2534	2841	2843	2851																
Stylosanthes	guianensis	CQ 27105A		756																			
Stylosanthes	guianensis	CQ 33034A		756																			
Stylosanthes	guianensis	CQ 34440		756																			
Stylosanthes	guianensis	CQ 34662		756																			
Stylosanthes	guianensis	CQ 38361		756																			
Stylosanthes	guianensis	Q 418		44	82	756																	
Stylosanthes	guianensis	Q 8231		756																			
Stylosanthes	guianensis	Q 8231A		756																			
Stylosanthes	guianensis	Q 8231B		756																			
Stylosanthes	guianensis	Q 8255		44	82	103	159	328	530	756	1408	1552	1580	1727									
				2033	2126	2152	2168	2229	2248														
Stylosanthes	guianensis	Q 8442		756																			

GENUS	Species	CPI	NUMBER	CULTIVAR	CB STRAIN ACCESSION NUMBER										
Stylosanthes	guianensis	Q	10291		44	82	103	159	328	530	756	1408	1650	1727	2033
					2126	2168	2229	2248							
Stylosanthes	guianensis	Q	10293		82	530	756	1408	1650	2126	2168	2229	2248		
Stylosanthes	hamata			Clon4	2126	3048	3050	3053	3289	3290	3291	3292	3293	3295	3296
Stylosanthes	hamata	CPI	33205		2126	2152	3050	3053							
Stylosanthes	hamata	CPI	33231		2126	2152	2841	3050	3053						
Stylosanthes	hamata	CPI	36046		2126	2152	2841	3050	3053						
Stylosanthes	hamata	CPI	37037		2126	2152	2841	3050	3053						
Stylosanthes	hamata	CPI	37038		2126	2152	2841	3053							
Stylosanthes	hamata	CPI	38842	Verano	82	103	159	328	756	1272	1408	1552	1650	1675	1984
					2033	2126	2134	2135	2136	2152	2229	2248	2837	2839	2841
					3043	3048	3050	3053	3055	3289	3290	3291	3292	3293	3294
					3295	3296									
Stylosanthes	hamata	CPI	38843		2126	2152	2841								
Stylosanthes	hamata	CPI	40264		2841										
Stylosanthes	hamata	CPI	40264A		2126	2144	2152	2841	3050	3053					
Stylosanthes	hamata	CPI	40268		2126	2152	2841								
Stylosanthes	hamata	CPI	40275B		2126	2144	2152	2841							
Stylosanthes	hamata	CPI	46587		44	82	103	159	328	756	1272	1408	1552	1650	1984
					2033	2126	2168	2229	3050	3053	3294				
Stylosanthes	hamata	CPI	46588		44	82	103	159	328	530	756	1272	1408	1552	1650
					1675	1727	2033	2126	2168	2229	2248				
Stylosanthes	hamata	CPI	49080		2126	2152	2841	3050	3053	3294					
Stylosanthes	hamata	CPI	50997		2126	3050	3053								
Stylosanthes	hamata	CPI	50998		2126	3050	3053								
Stylosanthes	hamata	CPI	51391		2126	3050	3053								
Stylosanthes	hamata	CPI	55802		103	159	328	530	756	1408	1650	2126	2168	2248	
Stylosanthes	hamata	CPI	55804		328	530	756	1408	1650	2033	2229	2248			
Stylosanthes	hamata	CPI	55809		103	159	328	530	756	1408	1552	1650	1727	2033	2168
					2229	2248									
Stylosanthes	hamata	CPI	55812		328	1984	2126								
Stylosanthes	hamata	CPI	55813		82	103	159	328	530	756	1408	1650	1675	2033	2126
					2229	2248									
Stylosanthes	hamata	CPI	55820		1984	2126	2152								
Stylosanthes	hamata	CPI	55821		82	103	159	328	756	1408	1650	1675	1984	2033	2126
					2144	2229	2248	3048	3050	3053	3289	3290	3291	3292	3293
					3294	3296									
Stylosanthes	hamata	CPI	55822	Amiga	82	103	328	530	1408	1650	1675	1984	2033	2126	2229
					2248										
Stylosanthes	hamata	CPI	55822	Amiga (a)	82	159	756	1650	2126	3048	3050	3053	3289	3290	3291
					3292	3293	3294	3296							

GENUS	Species	CPI NUMBER	CULTIVAR	CB STRAIN	ACCESSION NUMBER														
Stylosanthes	hamata	CPI 55822	Amiga (b)	159	756	1650	2126	3050	3289	3290	3291	3292	3293						
Stylosanthes	hamata	CPI 55822	Amiga (c)	82	159	756	1408	1650	2126	3048	3050	3053	3289	3290					
				3291	3292	3293	3294												
Stylosanthes	hamata	CPI 55822	Amiga (d)	82	159	756	1408	1650	2126	3048	3050	3053	3289	3290					
				3291	3292	3293	3294												
Stylosanthes	hamata	CPI 55822	Amiga (e)	159	756	1408	1650	2126	3048	3053	3289	3290	3292	3293					
Stylosanthes	hamata	CPI 55822	Amiga (f)	82	159	756	1408	1650	2126	3048	3050	3053	3289	3290					
				3291	3292	3293	3294												
Stylosanthes	hamata	CPI 55822	Amiga (g)	82	159	756	1408	1650	2126	3048	3050	3053	3289	3290					
				3291	3292	3293	3294												
Stylosanthes	hamata	CPI 55823		328	1984	2126													
Stylosanthes	hamata	CPI 55824		1984	2126														
Stylosanthes	hamata	CPI 55826		2126	3050	3053													
Stylosanthes	hamata	CPI 55827		2126															
Stylosanthes	hamata	CPI 55828		328	1675	1984	2126	2144	2152	2168									
Stylosanthes	hamata	CPI 55830		1984															
Stylosanthes	hamata	CPI 55831		103	1650	1984	2033	2152	2229	2248									
Stylosanthes	hamata	CPI 55871		82	159	328	756	1408	1650	1984	2033	2126	2168	2248					
Stylosanthes	hamata	CPI 56211		2126	3050	3053													
Stylosanthes	hamata	CPI 57248		2126	2152														
Stylosanthes	hamata	CPI 61204		2126	3053														
Stylosanthes	hamata	CPI 61623A		2126															
Stylosanthes	hamata	CPI 61669		2152															
Stylosanthes	hamata	CPI 61670		2126	3050	3053													
Stylosanthes	hamata	CPI 61671		328															
Stylosanthes	hamata	CPI 61671A		2126	3050	3053													
Stylosanthes	hamata	CPI 61672B		82	103	328	756	1650	1984	2033	2126	2152	2168	2229					
				2248															
Stylosanthes	hamata	CPI 61672Ba		2126	3050	3053													
Stylosanthes	hamata	CPI 61672Bb		82	756	1408	2126	3050	3053										
Stylosanthes	hamata	CPI 62160		2126	3050	3053													
Stylosanthes	hamata	CPI 62162		2126	3050	3053													
Stylosanthes	hamata	CPI 65363		3050	3053														
Stylosanthes	hamata	CPI 65364		2126	3050														
Stylosanthes	hamata	CPI 65365		2126	3048	3050	3053	3289	3290	3291	3292	3293	3296						
Stylosanthes	hamata	CPI 65368		2126	3050	3053	3289												
Stylosanthes	hamata	CPI 65371		2126	3289														
Stylosanthes	hamata	CPI 65962		1650	2126	3050	3053	3289											
Stylosanthes	hamata	CPI 65965		82	159	756	1650	2126	3048	3050	3053	3289	3290	3292					
				3293	3294														
Stylosanthes	hamata	CPI 68837		2126	3048	3050	3053	3289	3290	3292									

GENUS	Species	CPI NUMBER	CULTIVAR	CB STRAIN	ACCESSION NUMBER										
Stylosanthes	hamata	CPI 68838		2126 3048 3053	3289	3290	3292								
Stylosanthes	hamata	CPI 68840		2126 3048 3050	3053	3289	3290	3291	3292	3293	3295	3296			
Stylosanthes	hamata	CPI 70360		2126 3050 3053											
Stylosanthes	hamata	CPI 70366		2126 3050 3053											
Stylosanthes	hamata	CPI 70370		2126 3050 3053											
Stylosanthes	hamata	CPI 70371		2126 3050 3053											
Stylosanthes	hamata	CPI 70372		3053											
Stylosanthes	hamata	CPI 70374		2126 3050 3053											
Stylosanthes	hamata	CPI 70522		756 2126 3050	3289	3294									
Stylosanthes	hamata	CPI 70523		2126 3053											
Stylosanthes	hamata	CPI 70524		2126 3050 3053											
Stylosanthes	hamata	CPI 70525		2126 3053											
Stylosanthes	hamata	CPI 70529		1408 1650 2126	3050	3053	3289	3294							
Stylosanthes	hamata	CPI 72850		2126 3050 3053											
Stylosanthes	hamata	CPI 72852		2126 3050 3053											
Stylosanthes	hamata	CPI 72854		2126 3050 3053											
Stylosanthes	hamata	CPI 72859		2126 3053											
Stylosanthes	hamata	CPI 73484		2126 3050 3053											
Stylosanthes	hamata	CPI 73486		2126 3050 3053											
Stylosanthes	hamata	CPI 73487		3050 3053											
Stylosanthes	hamata	CPI 73488		2126 3053											
Stylosanthes	hamata	CPI 73491		2126 3050 3053											
Stylosanthes	hamata	CPI 73497		3050 3053 3289											
Stylosanthes	hamata	CPI 73498		2126 3053											
Stylosanthes	hamata	CPI 73499		2126 3050 3053											
Stylosanthes	hamata	CPI 73501		2126 3050 3053											
Stylosanthes	hamata	CPI 73505		2126 3050 3053											
Stylosanthes	hamata	CPI 73506		2126 3050 3053											
Stylosanthes	hamata	CPI 73507		2126 3050 3053											
Stylosanthes	hamata	CPI 73509		2126 3050 3053											
Stylosanthes	hamata	CPI 73511		2126 3050 3053											
Stylosanthes	hamata	CPI 73513		2126 3050											
Stylosanthes	hamata	CPI 73514		2126 3050 3053											
Stylosanthes	hamata	CPI 73515		2126 3050 3053											
Stylosanthes	hamata	CPI 73517		2126 3050 3053											
Stylosanthes	hamata	CPI 73523		2126 3050 3053											
Stylosanthes	hamata	CPI 73719		2126 3050 3053											
Stylosanthes	hamata	CPI 75162		82 159 530	756	1650	2126	3050	3053	3289	3291	3294			
Stylosanthes	hamata	CPI 75163		82 1650 2126	3053	3289	3291								
Stylosanthes	hamata	CPI 75164		82 756 1650	2126	3050	3053	3289	3291	3294					
Stylosanthes	hamata	CPI 75165		2126 3050 3053	3289										

GENUS	Species	CPI NUMBER	CULTIVAR	CB STRAIN	ACCESSION NUMBER
Stylosanthes	hamata	CPI 75166		82 530 756 1650 2126 3050 3053 3289 3291	
Stylosanthes	hamata	CPI 75167		2126 3050 3289	
Stylosanthes	hamata	CPI 75168		2126 3050 3053 3289 3291	
Stylosanthes	hamata	CPI 75169		2126 3289	
Stylosanthes	hamata	CPI 75171		2126 3050 3053 3289	
Stylosanthes	hamata	CPI 75172		2126 3050 3053 3289	
Stylosanthes	hamata	CPI 75173		2126 3050 3053	
Stylosanthes	hamata	CPI 75174		2126 3050 3053	
Stylosanthes	hamata	CPI 75175		2126 3050 3053	
Stylosanthes	hamata	CPI 94130		2126 3053	
Stylosanthes	hamata	CPI 94443		2126 3053	
Stylosanthes	hamata	CPI 94444		3289 3290 3292	
Stylosanthes	hamata	CPI 99670		2126 3053	
Stylosanthes	hamata	CPI 99675		2126 3053	
Stylosanthes	hamata	CPI 109305		2126 3053	
Stylosanthes	hamata	CPI 109307		2126 3053	
Stylosanthes	hamata	CPI 109308		2126 3053	
Stylosanthes	hamata	CPI 109310		2126 3053	
Stylosanthes	hamata	CPI 109312		3053 3295	
Stylosanthes	hamata	CPI 109314		3053 3295	
Stylosanthes	hamata	CPI 109315		2126 3053	
Stylosanthes	hamata	CPI 109316		2126 3053 3295	
Stylosanthes	hamata	CPI 109320		2126 3048 3053 3289 3290 3292	
Stylosanthes	hamata	CPI 109325		2126 3048 3289 3290 3292	
Stylosanthes	hamata	CPI 109326		82 159 1650 2126 3048 3053 3289 3290 3292 3293 3294	
Stylosanthes	hamata	CPI 109331		2126 3048 3050 3053 3289 3290 3291 3292 3293 3296	
Stylosanthes	hamata	CPI 109332		2126 3048 3050 3053 3289 3290 3291 3292 3293	
Stylosanthes	hamata	CPI 109344		82 159 756 1408 1650 2126 3048 3050 3053 3289 3290	
				3291 3292 3293 3294	
Stylosanthes	hamata	CPI 109346		2126 3053	
Stylosanthes	hamata	CPI 109347		2126 3048 3053 3289 3290 3291 3292 3293	
Stylosanthes	hamata	CPI 109349		2126 3048 3050 3053 3289 3290 3291 3292 3293 3295	
Stylosanthes	hamata	CPI 109350		2126 3048 3050 3053 3289 3290 3291 3292 3293 3295 3296	
Stylosanthes	hamata	CPI 110024		82 756 1650 2126 3050 3291 3292 3293	
Stylosanthes	hamata	CPI 110025		1650 2126 3048 3050 3290 3292 3293	
Stylosanthes	hamata	CPI 110026		1650 3048 3290	
Stylosanthes	hamata	CPI 110027		82 756 1650 2126 3048 3050 3053 3290 3291 3292 3293	
Stylosanthes	hamata	CPI 110028		2126 3048 3050 3053 3290 3293	
Stylosanthes	hamata	CPI 110029		82 159 756 1650 2126 3048 3050 3053 3289 3290 3291	
				3292 3293 3294	
Stylosanthes	hamata	CPI 110030		82 1650 3048 3050 3290 3291 3292 3293	

GENUS	Species	CPI NUMBER	CULTIVAR	CB STRAIN	ACCESSION NUMBER
Stylosanthes	hamata	CPI 110033		2126 3048 3053 3289 3290 3292	
Stylosanthes	hamata	CPI 110035		2126 3048 3053 3289 3290 3292	
Stylosanthes	hamata	CPI 110036		2126 3048 3053 3289 3290 3292 3293	
Stylosanthes	hamata	CPI 110037		82 159 1650 2126 3048 3053 3289 3290 3291 3292 3293	
Stylosanthes	hamata	CPI 110038		2126 3053 3289 3290 3292	
Stylosanthes	hamata	CPI 110039		1650 3048 3289 3293	
Stylosanthes	hamata	CPI 110040		159 1650 2126 3048 3289 3293	
Stylosanthes	hamata	CPI 110041		159 2126 3048 3050 3053 3289 3290 3291 3292 3293	
Stylosanthes	hamata	CPI 110042		1650 2126 3048 3050 3053 3289 3290 3291 3292 3293 3295	
Stylosanthes	hamata	CPI 110043		82 159 756 1650 2126 3048 3050 3053 3289 3290 3291	
Stylosanthes	hamata	CPI 110044		3292 3293 3294	
Stylosanthes	hamata	CPI 110045		2126 3048 3050 3053 3289 3290 3291 3292 3293 3295 3296	
Stylosanthes	hamata	CPI 110046		2126 3048 3050 3053 3289 3290 3291 3292	
Stylosanthes	hamata	CPI 110048		2126 3048 3050 3053 3289 3290 3292 3293	
Stylosanthes	hamata	CPI 110049		2126 3048 3050 3053 3289 3290 3292	
Stylosanthes	hamata	CPI 110050		2126 3048 3050 3053 3289 3290 3292 3293 3295 3296	
Stylosanthes	hamata	CPI 110051		2126 3048 3053 3289 3290 3292	
Stylosanthes	hamata	CPI 110057		1650 2126 3048 3050 3053 3289 3290 3291 3292 3293 3295	
Stylosanthes	hamata	CPI 110066		3296	
Stylosanthes	hamata	CPI 110067		2126 3053	
Stylosanthes	hamata	CPI 110068		2126 3048 3050 3053 3289 3290 3291 3292 3293 3296	
Stylosanthes	hamata	CPI 110069		2126 3048 3050 3053 3289 3290 3291 3292 3293	
Stylosanthes	hamata	CPI 110070		3048 3050 3053 3289 3290 3292 3293 3296	
Stylosanthes	hamata	CPI 110077		2126 3053	
Stylosanthes	hamata	CPI 110083		2126 3053	
Stylosanthes	hamata	CPI 110084		2126 3053	
Stylosanthes	hamata	CPI 110087		2126 3053	
Stylosanthes	hamata	CPI 110090		2126 3053	
Stylosanthes	hamata	CPI 110095		1650 2126 3048 3053 3289 3290 3292 3293 3294 3295	
Stylosanthes	hamata	CPI 110098		2126 3048 3050 3053 3289 3290 3291 3292 3293	
Stylosanthes	hamata	CPI 110099		2126 3053	
Stylosanthes	hamata	CPI 110104		2126 3048 3053 3289 3290 3291 3292	
Stylosanthes	hamata	CPI 110108		2126 3053	
Stylosanthes	hamata	CPI 110109		82 159 756 1408 1650 2126 3048 3050 3053 3289 3290	
Stylosanthes	hamata	CPI 110110		3291 3292 3293 3294	
Stylosanthes	hamata	CPI 110114		2126 3053	
Stylosanthes	hamata	CPI 110116		2126	
Stylosanthes	hamata	CPI 110116		82 159 756 1408 1650 2126 3048 3293 3295 3296	

CSIRO, Division of Tropical Crops & Pastures, Root-Nodule Bacteria Genetic Resource Collection, April 1993

GENUS	Species	CPI NUMBER	CULTIVAR	CB STRAIN	ACCESSION NUMBER															
Stylosanthes	hamata	CPI 110119		2126	3053															
Stylosanthes	hamata	CPI 110125		2126	3053															
Stylosanthes	hamata	CPI 110134		82	159	756	1408	1650	2126	3048	3050	3289	3290	3291						
				3292	3293	3294														
Stylosanthes	hamata	CPI 110135		82	159	756	1650	2126	3048	3050	3053	3289	3290	3291						
				3292	3293	3294														
Stylosanthes	hamata	CPI 110138		82	159	756	1408	1650	2126	3048	3050	3053	3289	3290						
				3291	3292	3293														
				3294	3295															
Stylosanthes	hamata	CPI 110162		2126	3048	3050	3053	3289	3290	3292	3293									
Stylosanthes	hamata	CPI 110166		2126	3048	3050	3053	3289	3290	3292	3295	3296								
Stylosanthes	hamata	CPI 110168		2126	3048	3289	3290	3292												
Stylosanthes	hamata	CPI 110171		2126	3053															
Stylosanthes	hamata	CPI 110173		2126	3053															
Stylosanthes	hamata	CPI 110174		2126	3053															
Stylosanthes	hamata	CPI 110176		2126	3053															
Stylosanthes	hamata	CPI 110179		2126	3053															
Stylosanthes	hamata	CPI 110181		2126	3053															
Stylosanthes	hamata	CPI 110185		2126	3053															
Stylosanthes	hamata	CPI 110186		2126	3053															
Stylosanthes	hamata	CPI 110190		2126	3053															
Stylosanthes	hamata	CPI 110205		2126	3048	3053	3289	3290	3292	3295										
Stylosanthes	hamata	CPI 110206		2126	3048	3050	3053	3289	3290	3291	3292	3293								
Stylosanthes	hamata	CPI 110207		2126	3053															
Stylosanthes	hamata	CPI 110209		2126	3048	3050	3289	3290	3292	3295	3296									
Stylosanthes	hamata	CPI 110311		2126	3053															
Stylosanthes	hamata	CPI 110316		3048	3289	3290	3293	3294												
Stylosanthes	hamata	CPI 110317		1650	2126	3048	3050	3053	3289	3290	3291	3292	3293							
				3295	3296															
Stylosanthes	humilis			82	103	121	328	530	756											
Stylosanthes	humilis		(sundaica)	93	105	236	238	239	240	272	273	300	312	319						
				438	442	470	481	516												
Stylosanthes	humilis	CPI 29252		103	328	530	756	2248												
Stylosanthes	humilis	CPI 33172		103	756	1408														
Stylosanthes	humilis	CPI 33502A		103	328	530	756	1408	1650	2033	2229	2248								
Stylosanthes	humilis	CPI 33502B		756																
Stylosanthes	humilis	CPI 33503		756																
Stylosanthes	humilis	CPI 33828		756																
Stylosanthes	humilis	CPI 33829		756																
Stylosanthes	humilis	CPI 33830		756																
Stylosanthes	humilis	CPI 33979		103	328	756														

CSIRO, Division of Tropical Crops & Pastures, Root-Nodule Bacteria Genetic Resource Collection, April 1993



GENUS	Species	CPI NUMBER	CULTIVAR	CB STRAIN	ACCESSION NUMBER
Stylosanthes	humilis	CPI 34001		756	
Stylosanthes	humilis	CPI 34116		756	
Stylosanthes	humilis	CPI 34610		756	
Stylosanthes	humilis	CPI 34752A (1)		756	
Stylosanthes	humilis	CPI 34752A (2)		756	
Stylosanthes	humilis	CPI 34905A		756	
Stylosanthes	humilis	CPI 37036		103	159 328 756 1408 1650 2168 2229
Stylosanthes	humilis	CPI 37206		756	
Stylosanthes	humilis	CPI 38753B		756	
Stylosanthes	humilis	CPI 39109B		756	
Stylosanthes	humilis	CPI 40265		82	103 756 1408
Stylosanthes	humilis	CPI 40266		756	
Stylosanthes	humilis	CPI 40267B		756	
Stylosanthes	humilis	CPI 40269A		756	
Stylosanthes	humilis	CPI 40269B		756	
Stylosanthes	humilis	CPI 40269D		756	
Stylosanthes	humilis	CPI 40269DFC (b)		756	
Stylosanthes	humilis	CPI 40269E		756	
Stylosanthes	humilis	CPI 40270A (1)		756	
Stylosanthes	humilis	CPI 40270B		756	
Stylosanthes	humilis	CPI 40270DFC (b)		756	
Stylosanthes	humilis	CPI 40271A (1)		756	
Stylosanthes	humilis	CPI 40272A		756	
Stylosanthes	humilis	CPI 40272B		756	
Stylosanthes	humilis	CPI 40272C		756	
Stylosanthes	humilis	CPI 40272D		756	
Stylosanthes	humilis	CPI 40273B		756	
Stylosanthes	humilis	CPI 40274B		756	
Stylosanthes	humilis	CPI 40275A		756	
Stylosanthes	humilis	CPI 40276B		756	
Stylosanthes	humilis	CPI 40276C		756	
Stylosanthes	humilis	CPI 40276D		756	
Stylosanthes	humilis	CPI 40276E		756	
Stylosanthes	humilis	CPI 40277		756	
Stylosanthes	humilis	CPI 40278		756	
Stylosanthes	humilis	CPI 40283B		756	
Stylosanthes	humilis	CPI 47477		756	
Stylosanthes	humilis	CPI 57246		103	159 328 1650 2229 2248
Stylosanthes	humilis	CPI 61667		103	328 1408 2033 2168 2229
Stylosanthes	humilis	CPI 61668		103	159 328 756 1650 2033 2168 2229 2248
Stylosanthes	humilis	CPI 61672A		159	756 1650 2168 2229 2248

23

GENUS	Species	CPI NUMBER	CULTIVAR	CB STRAIN	ACCESSION NUMBER
Stylosanthes	humilis	CPI 61674		103 756 1650 1984 2033 2229 2248 3291	
Stylosanthes	humilis	CPI 68841		756 3291 3294	
Stylosanthes	humilis	CQ 1266	Gordon	103 159 328 756 1408 1580 1675 1689 1727 2033	
Stylosanthes	humilis	CQ 1267	Lawson	103 159 328 530 756 1408 1650 1727 1984 2033 2168	
				2229 2248	
Stylosanthes	humilis	CQ 1268	Paterson	103 159 328 756	
Stylosanthes	humilis	CQ 1269	Black seed	103 159 756 1408 1580 1782	
Stylosanthes	humilis	CQ 1270	Commercial	103 159 328 530 756 1408 1727 2033	
Stylosanthes	humilis	CQ 1271		82 103 159 328 530 756 1408 1675 2033	
Stylosanthes	humilis	CQ 1272		82 103 159 328 530 756 1408 1650 2033 2168 2229	
Stylosanthes	leiocarpa	CPI 39117		756	
Stylosanthes	macrocephala	CPI 94404		2898 3048 3049 3050 3055 3154 3241 3306 3307 3308	
Stylosanthes	macrocephala	CPI 105481		2898 3048 3049 3050 3055	
Stylosanthes	macrocephala	CPI 105494		2898 3048 3049	
Stylosanthes	montevidensis	CPI 11494		756	
Stylosanthes	montevidensis	CPI 11496		82 756 2168	
Stylosanthes	montevidensis	CPI 11847		756	
Stylosanthes	montevidensis	CPI 39112		756	
Stylosanthes	scabra	CPI 34750A		756	
Stylosanthes	scabra	CPI 34750B		756	
Stylosanthes	scabra	CPI 34907		756	
Stylosanthes	scabra	CPI 34925		756	
Stylosanthes	scabra	CPI 34929		756	
Stylosanthes	scabra	CPI 36260A		756	
Stylosanthes	scabra	CPI 39113		756	
Stylosanthes	scabra	CPI 40205	Fitzroy	82 103 328 530 756 1272 1408 1552 1650 1675 2126	
				2152 2229 2248	
				3050 3294	
Stylosanthes	scabra	CPI 40284		756	
Stylosanthes	scabra	CPI 40285A		756	
Stylosanthes	scabra	CPI 40285B		756	
Stylosanthes	scabra	CPI 40285C		756	
Stylosanthes	scabra	CPI 40286A		756	
Stylosanthes	scabra	CPI 40287		756	
Stylosanthes	scabra	CPI 40288		756	
Stylosanthes	scabra	CPI 40289		756	
Stylosanthes	scabra	CPI 40290A		756	
Stylosanthes	scabra	CPI 40290B		756	
Stylosanthes	scabra	CPI 40291		756	
Stylosanthes	scabra	CPI 40292	Seca	82 103 159 328 530 756 1272 1408 1650 2126 2168	
				2229 3050 3289 3291 3294	

GENUS	Species	CPI NUMBER	CULTIVAR	CB STRAIN ACCESSION NUMBER												
Stylosanthes	scabra	CPI 40301		82	103	159	328	530	756	1408	1552	1650	1675	2033		
				2126	2152	2168	2229									
Stylosanthes	scabra	CPI 49306		82	103	328	530	756	1408	1650	2229	2248				
Stylosanthes	scabra	CPI 49831		756												
Stylosanthes	scabra	CPI 49833		756												
Stylosanthes	scabra	CPI 49834		756												
Stylosanthes	scabra	CPI 55799		756	1408	1650	2126	3050	3291	3294						
Stylosanthes	scabra	CPI 55803		756	2126	3050	3294									
Stylosanthes	scabra	CPI 55805		756	1408	1650	2126	3294								
Stylosanthes	scabra	CPI 55814		82	159	530	756	1408	1650	2126	3050	3053	3289	3291		
				3294												
Stylosanthes	scabra	CPI 55817		82	159	530	756	1408	1650	2126	3050	3053				
Stylosanthes	scabra	CPI 55818		82	530	756	1408	1650	2126	3050	3289	3291	3294			
Stylosanthes	scabra	CPI 55856		82	159	530	756	1408	1650	2126	3050	3053	3289	3291		
				3294												
Stylosanthes	scabra	CPI 55857		159	530	756	1408	1650	2126	3050	3294					
Stylosanthes	scabra	CPI 55858		82	159	530	756	1408	1650	2126	3050	3053	3289	3291		
				3294												
Stylosanthes	scabra	CPI 55860		530	756	1408	1650	2126	3050	3289	3294					
Stylosanthes	scabra	CPI 55866		530	756	1408	1650	2126	3050	3289	3294					
Stylosanthes	scabra	CPI 55867		82	159	530	756	1408	1650	2126	3050	3053	3289	3294		
Stylosanthes	scabra	CPI 55868		82	159	530	756	985	1015	1024	1243	1408	1650	2126		
				3036	3050	3289	3294									
Stylosanthes	scabra	CPI 55870		159	530	756	1408	1650	2126	3050	3053	3294				
Stylosanthes	scabra	CPI 55872		82	530	756	1408	1650	2126	3050	3289	3294				
Stylosanthes	scabra	CPI 55875		82	159	530	756	1408	1650	2126	3050	3053	3291	3294		
Stylosanthes	scabra	CPI 110359		2126	3053											
Stylosanthes	scabra	Q 8240		756												
Stylosanthes	scabra aff	CPI 92838B		2126	3053											
Stylosanthes	scabra aff	CPI 104710		2126	3053											
Stylosanthes	scabra aff	CPI 105546B		2126	3053											
Stylosanthes	scabra aff	CPI 105678		82	159	1048	2126	3048	3050	3053	3290	3293	3294			
Stylosanthes	scabra aff	CPI 110340		2126	3053											
Stylosanthes	scabra aff	CPI 110341		2126	3053											
Stylosanthes	scabra aff	CPI 110343		2126	3053											
Stylosanthes	scabra aff	CPI 110370B		2126	3053											
Stylosanthes	scabra aff	CPI 110361		2126	3053											
Stylosanthes	scabra aff	CPI 110372		2126	3053											
Stylosanthes	scabra aff	CPI 115993		2126	3053											
Stylosanthes	scabra aff	CPI 115994		2126	3053											
Stylosanthes	scabra aff	CPI 115995		159	756	1048	2126	3048	3294							



GENUS	Species	CPI NUMBER	CULTIVAR	CB STRAIN ACCESSION NUMBER																			
Teramnus	(sp.)	CPI 40311		756																			
Teramnus	(sp.)	CPI 40313		756																			
Teramnus	(sp.)	CPI 40314		756																			
Teramnus	gilletti	CPI 43791		756																			
Teramnus	uncinatus	CPI 22620		170	484	756	761																
Teramnus	uncinatus	CPI 25937		121	453	484	756	915	1003	1057	1350												
Teramnus	uncinatus	CPI 40307		756																			
Trifolium	(sp.)	CPI 18247		714	771	772	773	775	780														
Trifolium	africanum	CPI 26612		728	773	775	780	937	939	944													
Trifolium	alexandrinum			147	149	150	219	220	325	370	372	420											
Trifolium	alexandrinum	PE 343		806	875																		
Trifolium	baccarinii	CPI 25343		758	762	766	771	772	773	775	780												
Trifolium	baccarinii	CPI 25344		714	758	762	766	771	772	773	774	775	780										
Trifolium	burchellianum	CPI 22163		526	714	727	728	758	762	772	773	779	780	788									
				943	944																		
Trifolium	burchellianum	CPI 24132		720	727	728	732	766	772	773	780	944											
Trifolium	burchellianum	CPI 31995		727																			
Trifolium	cherleri	CPI 14549		867	2179																		
Trifolium	cryptopodium	CPI 100015		3310	3311	3313	3315																
Trifolium	decorum	CPI 91720		3310	3311	3313	3314	3315	3316														
Trifolium	fragiferum		Palestine	1	148	150	219	220	246	370	858												
Trifolium	fragiferum		Strawberry	876	1444																		
Trifolium	hirtum		Kondinin	806	869	875	2178																
Trifolium	incarnatum		Dixie	150	219	220	246	370	372	420	766	806											
Trifolium	masaiense	CPI 25373		770	771	776	782	788															
Trifolium	mattirolianum	CPI 37936		3311	3313	3314	3315																
Trifolium	polystachyum	CPI 33176		3310	3311	3313	3314	3315	3316														
Trifolium	pratense		Kondinin	3	147																		
Trifolium	pratense		Montgomery	806																			
Trifolium	pratense		New zealand	806	875																		
Trifolium	pseudostriatum	CPI 25372		783	937																		
Trifolium	quartinianum	CPI 100017		3310	3311	3313	3314	3315	3316														
Trifolium	repens		(Alumy Ck)	2178																			
Trifolium	repens		(Plains St	875																			
Trifolium	repens		Grasslands	1	3	147	806	861	875	1444													
Trifolium	repens		Irrigation	147	733	806	2178																
Trifolium	repens		Ladino	875	1444																		
Trifolium	repens		NZ White	782	1990																		
Trifolium	repens	CPI 15648		875	2178																		
Trifolium	repens	P 9193	Grasslands	2178																			
Trifolium	repens	P 9194	Grasslands	875	2178																		

CSIRO, Division of Tropical Crops & Pastures, Root-Nodule Bacteria Genetic Resource Collection, April 1993

GENUS	Species	CPI NUMBER	CULTIVAR	CB STRAIN	ACCESSION NUMBER															
Trifolium	rueppellianum	CPI 20744		773	780	944														
Trifolium	rueppellianum	CPI 21155		714	728	729														
Trifolium	rueppellianum	CPI 24977		779																
Trifolium	rueppellianum	CPI 25346		526	758	772	773	780	944											
Trifolium	rueppellianum	CPI 25375		758	773	780	944													
Trifolium	rueppellianum	CPI 27217		758	772	773	780	944												
Trifolium	semipilosum		Ex Beerwah	526	763	779	788													
Trifolium	semipilosum	CPI 21156		526	778	782	788													
Trifolium	semipilosum	CPI 24976	Kilimanjar	779																
Trifolium	semipilosum	CPI 25347		526	763	778	782	788	2031	2032	2102	2116	2117							
Trifolium	semipilosum	CPI 27218	Safari	526	778	782	788	944	2031	2102	2116	2117								
Trifolium	semipilosum	CPI 31996		526	778	782	788	2032	2102	2116	2117									
Trifolium	semipilosum	CPI 33182		526	778	782														
Trifolium	semipilosum	CPI 33183		526	772	778	782													
Trifolium	semipilosum	CPI 40617		526	778	782	788													
Trifolium	semipilosum	K 5154		526	778	782	788													
Trifolium	steudneri	CPI 17845		714																
Trifolium	steudneri	CPI 25348		714	771	772	780	783												
Trifolium	steudneri	CPI 37947		3310	3311	3312	3313	3314	3315	3316										
Trifolium	subterraneum		Bacchus Mar	806	875	1444														
Trifolium	subterraneum		Clare	806	875	1444														
Trifolium	subterraneum		Geraldton	875	2178	2179														
Trifolium	subterraneum		Woogenellup	806	867	2179														
Trifolium	tembense	CPI 20746		758	771	772	773	775												
Trifolium	tembense	CPI 24978		758	771	772	773	775	806											
Trifolium	tembense	CPI 25349		771	773	775														
Trifolium	tembense	CPI 25376		758	771	772	773	775												
Trifolium	tembense	CPI 100026		3310	3311	3313	3314	3315	3316											
Trifolium	usambarensis	CPI 22165		758	771	772	773	775	780											
Trifolium	usambarensis	CPI 25350		758	771	772	773	775												
Trifolium	usambarensis	CPI 25377		758	771	772	773	775												
Vicia	sativa			108																
Vigna	angularis		A2-15	121	284	512	661	756	786	890	985	1011	1015	1017						
Vigna	marina			121	159	170	453	756	786	915										
				1042	1044	1243	1247	1809												
Vigna	mungo	CPI 18118		756																
Vigna	parkeri	CPI 25378		756	985	1011	1015	1024	1057	1243	1717	2368	3245	3322						
				3323	3325	3326														
Vigna	parkeri	CQ 1374		756	985	1011	1015	1017	1024	1057	1243	1717	2368	3245						
				3322	3323	3324	3325	3326												
Vigna	radiata		Berken	121	284	512	661	756	890	985	1011	1015	1017	1042						

GENUS	Species	CPI NUMBER	CULTIVAR	CB STRAIN	ACCESSION NUMBER
				1243 1247	
Vigna	mungo	CPI 5979	Regur	121 170 284 512 756 786 890 985 1011 1015 1017	
				1024 1042 1243 1247 1809	
Vigna	radiata	CPI 12142		27 54 121 170 284 512 661 791 890	
Vigna	radiata	CPI 18118		121 512 890	
Vigna	umbellata	CPI 12143		121 170 791	
Vigna	unguiculata			756	
Vigna	unguiculata		Vita4	756 1015 1024 3319 3320 3321	
Vigna	unguiculata	CPI 23551	Poona	121 159 436 453 699	
Zornia	(sp.)	CPI 33207		756	
Zornia	(sp.)	CPI 34758		103 159 756 1408 1546 1550 1552	
Zornia	(sp.)	CPI 40334		756	
Zornia	diphylla	CPI 34941		530 1546 1550	
Zornia	diphylla	CPI 40327		756	
Zornia	glochidiata	CPI 50377		756	

List of Recommended Strains

Genus	species	Orig.No. /label	Status	Alternate No./label
=====	=====	=====	=====	=====
<i>Acacia</i>	<i>angustissima</i>	CB3155	R*	
<i>Acacia</i>	<i>mangium</i>	CB3156	R	
<i>Adesmia</i>	<i>bicolor</i>	CB1761	R	
<i>Aeschynomene</i>	<i>americana v glandulosa</i>	CB2312	B	
<i>Aeschynomene</i>	<i>falcata</i>	CB2312	B	
<i>Alysicarpus</i>	<i>vaginalis</i>	CB2201	B	
<i>Arachis</i>	<i>hypogaea</i>	NC92	R	CB3094
<i>Arachis</i>	<i>pintoii</i>	CIAT3101	B	CB3125
<i>Cajanus</i>	<i>cajan</i>	CB3068	B	
<i>Calliandra</i>	<i>calothyrsus</i>	TAL33	R	CB3171
<i>Calopogonium</i>	<i>caeruleum</i>	MS111	B	CB3128
<i>Calopogonium</i>	<i>mucunoides</i>	CB756	* B	
<i>Cassia</i>	<i>rotundifolia</i>	CB1483	B	
<i>Centrosema</i>	<i>brasilianum</i>	CB2949	B	
<i>Centrosema</i>	<i>pubescens</i>	CB1923	* B	
<i>Centrosema</i>	(most other species)	CB1923	* B	
<i>Chamaecytisus</i>	<i>palmensis</i>	CC1500	R	CB3074
<i>Cicer</i>	<i>arietinum</i>	CC1192	* R	CB2855
<i>Clitoria</i>	<i>ternatea</i>	CB756	* B	
<i>Codariocalyx</i>	<i>gyroides</i>	CB627	* B	
<i>Coronilla</i>	<i>varia</i>	CC401	R	CB2012
<i>Cyamopsis</i>	<i>tetragonolobus</i>	QA1083	B	CB3035
<i>Desmanthus</i>	<i>virgatus</i>	CB1397	* R	
<i>Desmodium</i>	<i>heterophyllum</i>	CB2085	B	
<i>Desmodium</i>	<i>intortum</i>	CB627	* B	
<i>Desmodium</i>	<i>uncinatum</i>	CB627	* B	
<i>Gliricidia</i>	<i>sepium</i>	CB3090	B	
<i>Glycine</i>	<i>max</i> (all cv except Hardee)	CB1809	* B	
<i>Glycine</i>	<i>max</i> (cv Hardee)	CC709	B	CB2885
<i>Lablab</i>	<i>purpureus</i>	CB1024	* B	
<i>Lens</i>	(sp.)	SU391	* R	CB1447
<i>Lespedeza</i>	<i>striata</i>	CB756	* B	
<i>Leucaena</i>	<i>diversifolia</i>	CB3060	* R	TAL1145
<i>Leucaena</i>	<i>esculenta</i>	CB3060	* R	TAL1145
<i>Leucaena</i>	<i>leucocephala</i>	CB3060	* R	TAL1145
<i>Leucaena</i>	<i>pulverulenta</i>	CB3060	* R	TAL1145
<i>Lotononis</i>	<i>angolensis</i>	CB1323	B	
<i>Lotononis</i>	<i>bainesii</i>	CB376	* B	
<i>Lotus</i>	<i>corniculatus</i>	SU343	* R	CB2938
<i>Lotus</i>	<i>uliginosus</i>	CC829	* B	CB2270
<i>Lupinus</i>	(all species)	WU425	* B	CB2272
<i>Macroptilium</i>	<i>africanum</i> (a)	CB756	* R	
<i>Macroptilium</i>	<i>atropurpureum</i>	CB756	* R	
<i>Macroptilium</i>	<i>geophyllum</i>	CB1717	R	
<i>Macroptilium</i>	<i>martii</i>	CB1717	R	
<i>Macroptilium</i>	<i>lathyroides</i>	CB756	* R	
<i>Macrotyloma</i>	<i>axillare</i>	CB1024	* R	
<i>Macrotyloma</i>	<i>uniflorum</i>	CB1024	* R	
<i>Medicago</i>	(all species except murex)	CC169	* R	CB3061
<i>Medicago</i>	<i>murex</i>	WSM540	R	(g)
<i>Neonotonia</i>	<i>wightii</i> (all cultivars)	CB756	* R	
<i>Onobrychis</i>	<i>sativa</i>	CB2000	R	
<i>Ornithopus</i>	<i>compressus</i>	WU425	* R	CB2272
<i>Ornithopus</i>	<i>sativus</i>	WU425	* R	CB2272
<i>Peuraria</i>	<i>phaseoloides</i>	CB756	* B	
<i>Phaseolus</i>	<i>vulgaris</i>	CC511	* R	CB2899
<i>Pisum</i>	<i>arvense</i>	SU391	* R	CB1447
<i>Pisum</i>	<i>sativum</i>	SU391	* R	CB1447
<i>Prosopis</i>	<i>chilensis</i>	TAL600	R	CB3108
<i>Sesbania</i>	<i>grandiflora</i>	PMA119	R	CB3237
<i>Sesbania</i>	<i>sesban</i>	PMA295/2	R	CB3287
<i>Stylosanthes</i>	<i>capitata</i>	CIAT170	B	CB3055
<i>Stylosanthes</i>	<i>fruticosa</i>	CB2168	B	
<i>Stylosanthes</i>	<i>guianensis</i> (b)	CB82	* B	
<i>Stylosanthes</i>	<i>guianensis</i> cv Oxley (c)	CB82	* B	or CB1650
<i>Stylosanthes</i>	<i>hamata</i> (cv Verano (d))	CB1650	* B	



<i>Stylosanthes</i>	<i>hamata</i> (e)	CB2126	B	
<i>Stylosanthes</i>	<i>humilis</i> (all cultivars)	CB82	* B	
<i>Stylosanthes</i>	<i>scabra</i> (Seca, Fitzroy)	CB82	* B	
<i>Stylosanthes</i>	<i>scabra</i> (aff. lines)	CB2126	B	or CB3053
<i>Stylosanthes</i>	(sp.)	(f)		
<i>Teramnus</i>	<i>uncinatus</i>	CB756	* B	
<i>Trifolium</i>	<i>ambiguum</i>	CC283a	R	CB3062
<i>Trifolium</i>	<i>burchellianum</i>	CB727	R	
<i>Trifolium</i>	<i>calocephalum</i>	CB3316	R	
<i>Trifolium</i>	<i>cryptopodium</i>	CB3314	R	
<i>Trifolium</i>	<i>decorum</i>	CB3315	R	
<i>Trifolium</i>	<i>incarnatum</i>	WU95	* R	CB2397
<i>Trifolium</i>	<i>polystachyum</i>	CB3311	R	
<i>Trifolium</i>	<i>repens</i>	TA1	* R	CB1990
<i>Trifolium</i>	<i>rueppellianum</i>	CB758	R	
<i>Trifolium</i>	<i>semipilosum</i>	CB782	* R	
<i>Trifolium</i>	<i>subterraneum</i>	WU95	* R	CB2937
<i>Trifolium</i>	<i>tembense</i>	CB758	R	
<i>Vicia</i>	<i>sativa</i>	SU391	* R	CB1447
<i>Vigna</i>	(all species)	CB1015	* B	

\* R and B are *Rhizobium* and *Bradyrhizobium*, respectively.

\* Strain available as commercial inoculant.

- (a) This strain can be used for a wide range of species from many genera, e.g., *Atylosia*, *Canavalia*, *Crotalaria*, *Flemingia*, *Indigofera*, *Mucuna*, *Phosopocarpus*, *Rhynchosia*, *Tephrosia*.
- (b) Schofield types, Cook, Endeavour, Graham and most lines of *S. erecta*, *S. fruticosa*, *S. viscosa*.
- (c) and other *S. guianensis* var *intermedia* Fine Stemmed types.
- (d) and Amiga and most tetraploid lines.
- (e) all diploid lines from alkaline soils.
- (f) use a mixture of CB82, CB328, CB1650, CB2229 for untested lines.
- (g) not available in CB Collection.